

# WaveLogic 5 Nano 100G/200G CFP2-DCO

Ciena Optical Microsystems



Ciena's WaveLogic™ 5 Nano 100G/200G CFP2-DCO is a dual-rate, single-carrier, C-band coherent transceiver capable of transmitting and receiving up to 2 x 100 Gb/s of client payload on a single wavelength. This CFP2 MSA-compliant module delivers an industry-leading solution for high-bandwidth, line-side DWDM transmission for both telecom and data center applications.

## What is WaveLogic 5 Nano 100G/200G CFP2-DCO?

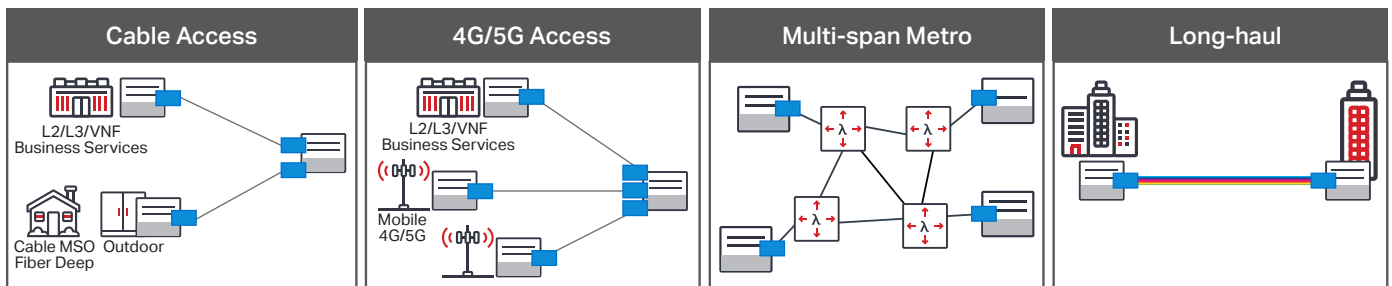
Advanced coherent DSP technology combined with a highly integrated, tunable optical subassembly enables flexible coherent transmission in a compact, pluggable form. The WaveLogic 5 Nano 100G/200G CFP2-DCO supports operation at 28GBaud dQPSK for 100G interoperable industry standards defined by the ITU-T, CableLabs, and Open ROADM. Enhanced performance modes at 32GBaud are also supported, as well as a range of client-side signaling options for Ethernet and OTN clients.

The module supports industry platforms with CFP2-compatible sockets for a range of 100G and 200G applications. Fully tunable through C-band frequency range, the module also has an embedded PRBS generator/analyzer and line and client (host)-side loopbacks for diagnostics.

The mechanical form factor, 104-pin connector and MDIO host interface for configuration, control, and monitoring are standard CFP2 MSA-compliant.

## Where does WaveLogic 5 Nano 100G/200G CFP2-DCO fit?

The WaveLogic 5 Nano 100G/200G CFP2-DCO is intended to be used in conjunction with a host platform to support DWDM transmission over optical links for access (cable MSO and 4G/5G), metro-regional, and long-haul networks. It supports various system applications, including transponder, OTN-switched, packet-switched, or router interfaces. The hardened variant of the module supports extended operating temperature ranges for exterior deployments.

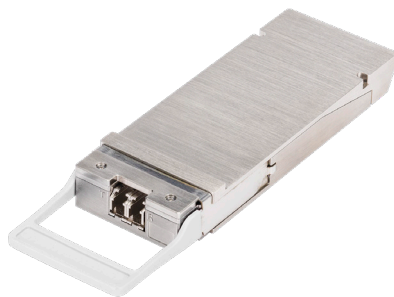


■ WaveLogic 5 Nano 100G/200G CFP2-DCO

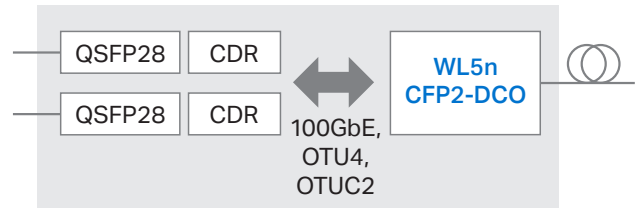
## Why WaveLogic 5 Nano 100G/200G CFP2-DCO?

WaveLogic 5 Nano 100G/200G CFP2-DCO offers:

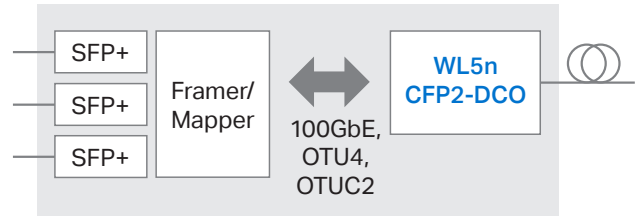
- Single-carrier 100G/200G coherent optics
- 100G 28GBd dQPSK SC-FEC interoperable modes
  - ITU-T G.709.2/G.698.2
  - CableLabs P2P Coherent Optics PHY
  - OpenROADM MSA
- Enhanced performance modes
  - 100G 32GBd QPSK SD-FEC
  - 200G 32GBd 16QAM SD-FEC
- Versatile client interface support
  - CAUI-4 with 802.3bj FEC for 100GbE
  - OTL4.4 with GFEC for OTU4
  - 2 x OTLC.4 with GFEC for OTUC2
- MDIO management interface to host systems for configuration and monitoring
- Line and host side PRBS and loopback support
- Hardened variant (100G only) with extended operating case temperature
- CFP2 MSA-compliant form factor



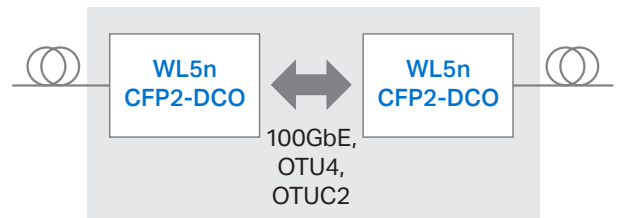
### Muxponder



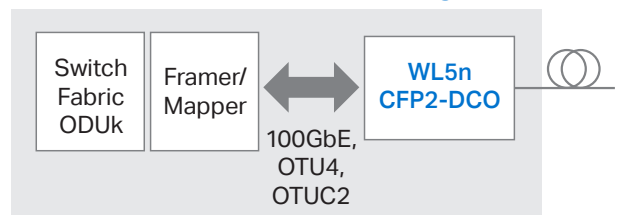
### Multi-Service Muxponder



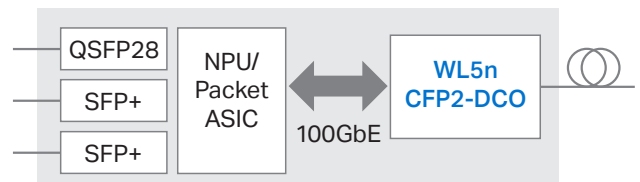
### OTN Regen



### Packet OTN Switching



### Packet Switching



Was this content useful?